

SPECIAL  
EDITION

# PULSEPOINT



PRESIDENT'S COUNCIL

THE NEWSLETTER OF THE PRESIDENT'S COUNCIL: THE HEART OF PRIVATE GIVING AT PURDUE UNIVERSITY // Winter 2022



The 50th anniversary gala Annual Dinner included a tribute to President Mitch Daniels and a video presentation celebrating the impact of President's Council. (inside)

## Dear President's Council family,

As another calendar year draws to a close, we are also winding down our celebrations for President's Council's 50th anniversary. As I reflect on all we've accomplished this past half-century, I'm grateful for those alumni and friends who have poured themselves into our university, helping Purdue provide an incomparable education.

Now, it's time to look forward. As we welcome Mung Chiang as the university's new president, I'm invigorated by the opportunities ahead. Building upon the groundwork already laid, the President's Council Advisory Board is developing a strategic plan to create a stronger sense of community. I'm truly thankful for the time and commitment of this group and want to express my deepest gratitude to outgoing Cochairs Randy and Linda Shields and new Board Chair Patsy Mellott.

Finally, plan to join us February 8-12 in Naples, Florida. You won't want to miss this fun annual gathering and the chance to engage with your President's Council family.

*Hail Purdue!*

April Headdy

## IN THIS ISSUE

- + A Gold(en) and Black Celebration
- + In Focus: Giant Leaps Across Campus
- + A Message From President Daniels





## PRESIDENT'S COUNCIL

The heart of private giving  
at Purdue University.

**PULSEPOINT** // Winter 2022

### ADVISORY BOARD

Patsy J. Mellott  
*Chair*

Brenton S. Bible	Barbara A. Meyer
Stacy A. Bible	Scott E. Meyer
Bethany Clopton	Alysa C. Rollock
Christopher M. Clopton	David Rollock
Mary Lou Hazleton	M. Judith Sheehan
Dr. Richard A. Hazleton	Thomas J. Sheehan Jr.
Giovanna Krozel	Linda Haldrup Shields
Kenneth W. Krozel	Randall C. Shields

### STAFF

April Headdy *Associate Vice President  
for Donor Relations*

Traci Robison	<i>Production Manager</i>
Matt Schnepf	<i>Senior Writer</i>
Steve Schlenk	<i>Copy Editor</i>
Cathy Swick	<i>Senior Creative Director</i>
Keely Houk	<i>Art Director</i>

### STAY CONNECTED

#### FACEBOOK

Search: Purdue President's Council

This group page is exclusive to  
President's Council members.

#### TWITTER

Search: PUPresCouncil

This is a public account.

#### INSTAGRAM

Search: PurduePresCouncil

This is a public account.

#### ARE YOU **PURDUE CONNECT'D?**

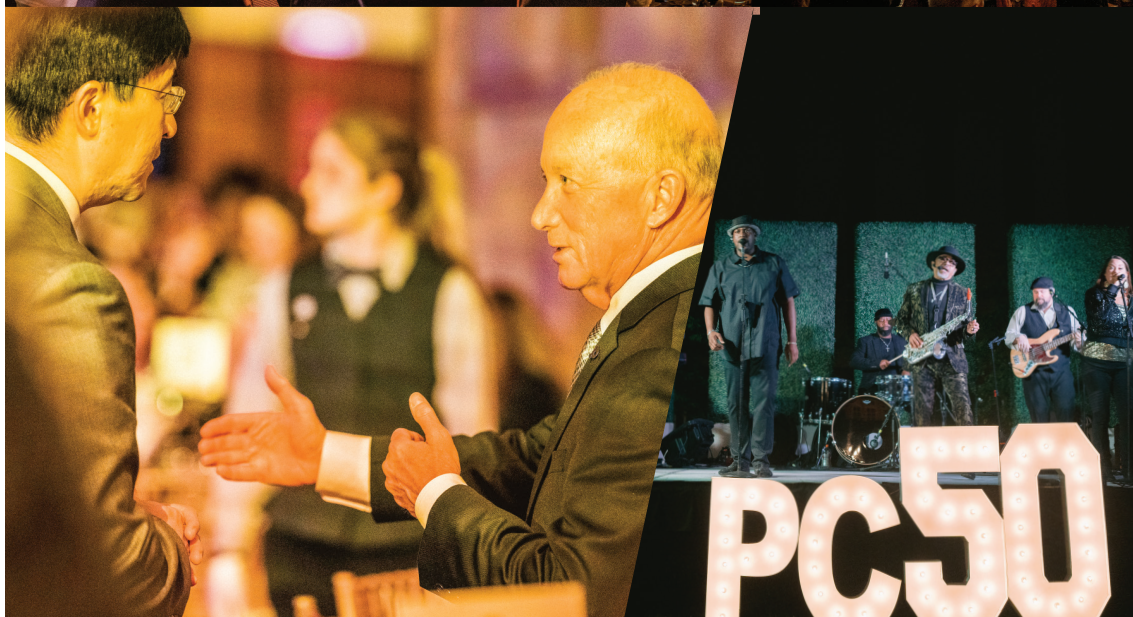
View your giving history, including  
information about current pledges,  
corporate matches, endowments, and  
annual giving summaries; verify your  
membership in giving societies; and check  
your Convo points—all in one convenient  
location. Go to **[purdueforlife.org/pc](https://purdueforlife.org/pc)**  
and select **Purdue Connect Portal**  
at the top of the page.

### CONTACT

Call **765-494-9290**

Email **[PC@PURDUEFORLIFE.ORG](mailto:PC@PURDUEFORLIFE.ORG)**

Web **[PURDUEFORLIFE.ORG/PC](https://PURDUEFORLIFE.ORG/PC)**



This summer we  
published our golden  
anniversary yearbook—a  
publication 50 years in the  
making. Request a copy  
by emailing us at  
**[pc@purdueforlife.org](mailto:pc@purdueforlife.org)**.



A GOLD(EN) AND  
BLACK CELEBRATION!

# 50 YEARS OF PRESIDENT'S COUNCIL AT PURDUE

■ THE 50TH ANNIVERSARY YEAR OF PRESIDENT'S COUNCIL has been one to remember. From West Lafayette to Florida, Europe, and beyond, we've commemorated five incredible decades of loyalty and leadership giving.

Our celebrations kicked off during Annual Dinner in Naples, and the festivities continued from there. Special Back to Class sessions highlighted Purdue's next 50 years, and our tailgate flag offer increased the council's visibility during busy home football game weekends.

We further enhanced our presence through anniversary signage prominently displayed on campus, in addition to sponsorship of the Presidential Lecture Series and various athletic events. Beyond Purdue, we enjoyed unique travel excursions, including a picturesque Southern France river cruise and an unforgettable weekend in Charleston, South Carolina.

At our golden anniversary gala during Homecoming weekend, we reflected on our members' enduring impact on students, faculty, and alumni. We also honored President Mitch Daniels as his tenure at the helm of Purdue comes to a close.

Now, as we prepare for new campus leadership, private giving will continue to elevate the university and ensure its continued success. Thank you for supporting Purdue's giant leaps in learning and discovery while also helping to provide an affordable, world-class education.

*HERE'S TO OUR NEXT 50 YEARS!*







**IN FOCUS**

# GIANT LEAPS ACROSS CAMPUS:

---

An inside look at high-impact  
projects and initiatives taking  
place at Purdue



## College of Agriculture

### FOCUS AREA BRINGING FORESTRY INTO THE DIGITAL AGE

**WHY IT MATTERS:** Forests play a critical role in our economy and also provide vital ecosystem services, including flood control, carbon sequestration, nutrient management, and recreational amenities. Forest management primarily uses conventional methods that haven't changed in decades, such as manual measurement of individual trees, which is time consuming and infeasible for large forests. As part of Purdue's Next Moves, Plant Sciences 2.0 includes investments in digital forestry to create enhanced research opportunities to revolutionize forestry into the digital age.

The same phenotyping tools and digital technologies that will add value to plants will enable worldwide forest analysis, including tree census; help monitor and mitigate forest fires; and prevent the spread of disease. The College of Agriculture leads a multidisciplinary research team in developing digital platforms and strategies to help transition the field to data-driven precision forest management that is supported by artificial intelligence. Toward that goal, the college is bringing together experts from various disciplines, including forestry, entomology, ecology, engineering, geomatics, aviation technology, remote sensing, machine learning, data analysis and visualization, robotics, the internet of things, and geospatial information retrieval.

Efforts are proving successful. Through the integration of aerial and ground-based mobile mapping sensors and systems, a team of Purdue digital forestry researchers recently used advanced technology to locate, count, and measure over a thousand trees in a matter of hours. This groundbreaking development toward using technology for a quick, accurate inventory of the global forest ecosystem will increase the ability to prevent forest fires, detect disease, perform accurate carbon counting, and make informed forest-management decisions.



## Purdue Athletics

### FOCUS AREA PURDUE ATHLETICS NEXT MOVES

**WHY IT MATTERS:** Purdue Athletics Next Moves is the fundraising roadmap guiding the direction for the 2022–23 year. In partnership with the Purdue for Life Foundation and the John Purdue Club (JPC), Purdue Athletics has identified top priorities to continue building on the department's momentum amid the ever-changing landscape of college athletics.

Fundraising objectives include fully funding the annual JPC scholarship and academic support costs, phase two of the Ross-Ade Stadium renovations, and additional support for various projects and endowments related to all 18 Boilermaker sports programs.

Additionally, full endorsement has been given to the external efforts of the nonprofit Boilermaker Alliance. Formed by a group of passionate alumni committed to the university and Purdue Athletics, the alliance aims to establish an elite presence in the era of name-image-likeness and offer support for all Boilermaker student-athletes.



## College of Education

### FOCUS AREA GER<sup>2</sup>I AND THE GCT PROGRAM

**WHY IT MATTERS:** Developing academic talent and fostering academic excellence and creativity in all students—especially those who are historically underserved—is critical to our nation's future. The Gifted Education Research and Resource Center (GER<sup>2</sup>I) and the Gifted, Creative, and Talented Education (GCT) Program have achieved national and international prominence for providing innovative summer residential programs and collaborating with K–12 school partners nationally to expand access to academically challenging coursework and gifted instructional strategies.

Two signature achievements of the affiliated faculty, led by the late Marcia Gentry, include:

- // Pioneering methods (such as the HOPE scale) for identifying giftedness in youth from low-income, Black, Latino, and Native American communities—populations underrepresented in gifted-and-talented programs nationally.
- // Leading research and practice to provide inclusive educational programming for gifted and talented youth, in addition to expanded opportunities for academic excellence and psychosocial development among historically underserved low-socioeconomic and culturally diverse populations.



## College of Engineering

### FOCUS AREA ZUCROW LABS

**WHY IT MATTERS:** As the world's largest academic propulsion lab, **Zucrow Labs is the place where rocket scientists are born.** Since 1948, Purdue has been the premier destination for researchers of rockets, turbine engines, combustion, and other forms of propulsion. The 24-acre Zucrow Labs complex hosts 175 graduate students, 20 faculty, and more than \$18 million worth of research projects annually.

The past, present, and future of propulsion can all be found at Zucrow Labs. When aerospace companies want to test their latest turbine engines, Purdue has diagnostic facilities found nowhere else. And when NASA wants to develop new propellants for its spacecraft, Zucrow Labs is one of the only facilities equipped to test these energetic materials.

Purdue is also involved in the next generation of hypersonics: vehicles designed to travel faster than Mach 5. The university is building a \$41 million hypersonics research facility that will include the world's only "quiet" Mach 8 wind tunnel.

## The Graduate School

### FOCUS AREA INCREASING MINORITY RECRUITMENT AND RETENTION

**WHY IT MATTERS:** **Minority recruitment and retention initiatives help create a diverse, respectful, and inclusive campus environment.** The Graduate School's Office of Graduate Diversity Initiatives hosts three annual programs aimed at increasing minority recruitment and retention.

Through the Graduate Diversity Visitation Program (GDVP), students visit campus to explore opportunities available to them at Purdue. The Graduate School covers all expenses, and 58% of 2021 GDVP participants ultimately applied to the university.

Students who attend the Summer Research Opportunities Program (SROP) receive a stipend and paid expenses to spend eight weeks researching with a Purdue faculty advisor, networking, and preparing the Graduate School application. Nearly 20% of 2021 SROP attendees applied to Purdue.

Finally, the Graduate Bridge Program helps incoming students jump-start their Purdue graduate studies by attending an eight-week program before the start of their first semester. Participants conduct research with a faculty member; attend professional development workshops and social activities; and receive a stipend, housing allowance, and travel expenses. In 2021, Bridge expanded to a two-year initiative to help students through the critical period when many are likely to withdraw from their degree programs.

## College of Health and Human Sciences

### FOCUS AREA CENTER FOR EARLY LEARNING

**WHY IT MATTERS:** **The Center for Early Learning brings together researchers, educators, families, and policymakers to make lasting impacts on children's lives in Indiana and beyond.** An interdisciplinary initiative dedicated to improving the quality of early childhood education, the center promotes school readiness and healthy development with a focus on research, practice, and policy. It generates and disseminates high-quality research that expands the knowledge base of early >>>





childhood learning. For example, the center develops effective classroom-based interventions to promote school readiness skills that are foundational for academic achievement and life success.

The center also provides professional-development opportunities for teachers to promote developmentally appropriate practice based on cutting-edge research in early childhood education. Toward this goal, it hosts teacher professional-development trainings to translate rigorous research into classroom practices. The center also engages in evaluation work at local, state, and national levels to inform policy efforts, which includes evaluating the state-funded On My Way Pre-K program. In addition, the center is home to the Early Learning Matters curriculum, a comprehensive research-informed program designed for implementation in classrooms serving children from birth to age 5.

The College of Health and Human Sciences is advancing sustainability by obtaining funding for personnel to dedicate time across multiple aspects of the center, both for annual programming and for supporting the education and training of future early childhood education scholars.

## John Martinson Honors College

### FOCUS AREA RESEARCH GENERATORS

**WHY IT MATTERS:** John Martinson Honors College Research Generators are communities of inquiry designed to jump-start new or expanded research led by teams of faculty, staff researchers, and students. Research generators cultivate research thinking and enable students to complete their scholarly project requirement through course offerings and non-credit-bearing experiential learning.

Each generator has a broad interdisciplinary theme and welcomes students from any major. Faculty and staff members in fields associated with the theme are invited each year to become affiliates. Initial funding of new research generators is for a three-year period.

## College of Liberal Arts

### FOCUS AREA BA DEGREE IN ARTIFICIAL INTELLIGENCE (AI)

**WHY IT MATTERS:** As AI touches more aspects of life, it's critical to develop leaders who understand related technology and who are prepared to make ethical decisions regarding AI's development and implementation. In 2019, the College of Liberal Arts received a \$491,043 Lilly Endowment planning grant to support the Leading Ethically in the Age of AI and Big Data project. This initiative will prepare future leaders to bridge the gap between ethical decision making and the vast possibilities of AI and big data.

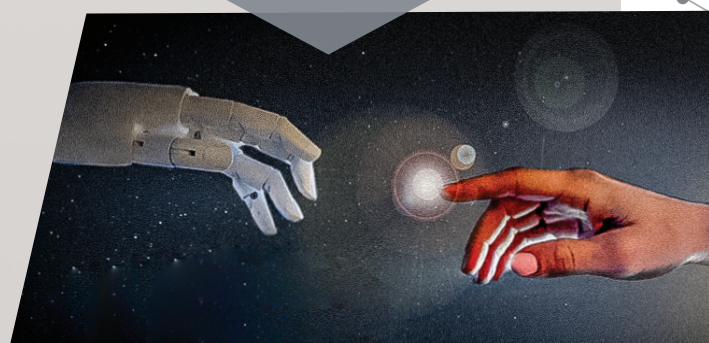
AI jobs are in high demand, more than doubling between 2015 and 2018. In the World Economic Forum's prediction of top emerging careers, AI and machine-learning specialists rank second after data analysts and scientists.

The new artificial intelligence major in the Department of Philosophy is more theoretically based in the concepts of knowledge and intelligence. The degree offers an essential and complementary alternative to the College of Science's BS degree in artificial intelligence and its more traditional focus on teaching students to create AI.

The BA program equips students to ask basic questions about intelligence as they learn to consider the ethical principles guiding developing technologies. Students take a few computer science classes but focus primarily on the conceptual and ethical issues required for AI development. Graduates will not be AI coders; instead, they will be project managers, ethics officers, and business leaders helping to craft and implement AI technologies that serve people and society in positive ways.

This degree is ideal for students with a deep interest in AI and its implications who seek to be at the forefront of decision making that will shape new technologies.

The BA degree offers an essential and complementary alternative to the College of Science's BS degree in artificial intelligence and its more traditional focus on teaching students to create AI.





## Libraries and School of Information Studies

### FOCUS AREA MORE THAN BOOKS—PLANNING FOR THE FUTURE OF LIBRARIES

**WHY IT MATTERS:** As Purdue's enrollment growth and the increasing availability of digital library resources converge, the time is right to provide more programmatic and study space for students. To support the university's world-class educational environment and the Transformative Education 2.0 initiative—part of Purdue's Next Moves—Purdue Libraries and School of Information Studies has embarked on a master planning process.

While much has changed since the advent of the internet, libraries continue to serve three fundamental and distinct roles on university campuses by providing a place for research and study, access to a collection of scholarly materials, and a source of human expertise.

Today, most scholarly materials or collections provided by Purdue are electronic, available 24/7 anywhere to students, researchers, faculty, and staff; yet many students report visiting a Purdue library four to five days a week. With digital access so prevalent and enrollment continuing to grow, libraries at Purdue can be transformed to better meet student needs by providing more devoted study space with human expertise available nearby.

What makes a great library today? One that evolves regularly to meet student, faculty, staff, and campus needs.

## School of Management

### FOCUS AREA THE NEW SCHOOL OF BUSINESS

**WHY IT MATTERS:** Purdue is redefining the preparation of business leaders through a transformation that will sharply raise the reputation, rankings, and enrollment of the new School of Business. The school's mission is best captured by the words of President Mitch Daniels: "Students in Purdue's new School of Business will receive a well-rounded education, including the history, philosophy, and economic theory of free market systems, and a firm grounding in the liberal arts and the communication skills that come with it. They will enter the world proud of the careers they have chosen and thoroughly prepared for leadership and managerial excellence in the most technologically complex fields."

The transformation from the School of Management into the School of Business will include several initiatives:

- // The Cornerstone for Business undergraduate certificate program, which will introduce students to transformative texts related to markets and business while enhancing their ability to think critically and communicate effectively.
- // Increasing undergraduate enrollment to 4,000, doubling the size of graduate programs, and expanding the faculty.
- // Degree programs building on a heritage of combining STEM foundations with business acumen to produce students at the cutting edge of business analytics who are ready to lead or establish great technology companies.
- // A future-focused campus building to facilitate new ways of teaching, learning, collaborating, and innovating.



## College of Pharmacy

### FOCUS AREA FUTURE 4 PHARMACY

**WHY IT MATTERS:** The College of Pharmacy is looking to transform the future of pharmacy. The proposed Nursing and Pharmacy Education Building will support cutting-edge education that prepares graduates to be leaders through practice within general and specialized clinical settings.

For over 135 years, College of Pharmacy graduates have earned recognition as leaders in the profession and science of pharmacy. Highly sought at both the state and national level due to their unique skill sets, they often secure competitive residencies, leadership positions, and change-agent roles. >>>



Proposed Nursing and Pharmacy Education Building



It's paramount to prepare students for future changes, equipping them to serve as leaders in health care and pharmaceutical settings for generations to come. As their work rapidly evolves thanks to science and technology advances, pharmacists will play central roles in delivering patient care in a broad range of settings. Community pharmacies will expand point-of-care testing for the diagnosis and monitoring of various diseases, making the pharmacy a hub for primary health care.

## Purdue Center for Cancer Research

### FOCUS AREA INNOVATION IN CANCER DIAGNOSIS AND PREVENTION

**WHY IT MATTERS:** Statistics show that one in three women and half of all men will be diagnosed with cancer during their lifetimes. The Purdue Center for Cancer Research (PCCR) has more than 120 faculty members working to develop new therapeutics, diagnostics, and surgical tools with over 40 potential therapeutics in the pipeline moving toward the clinic. This means the drugs were effective in early stage testing, the results of which form the foundation for further development.

Eleven novel therapeutics developed by PCCR faculty are currently in human clinical trials. Not only is PCCR developing therapeutics and diagnostic agents, but three of them recently gained FDA approval by research and development stemming from the laboratory of Phil Low, a Presidential Scholar for Drug Discovery and the Ralph C. Corley Distinguished Professor of Chemistry. The most recent, Cytalux, is the first FDA-approved fluorescent imaging technology to light up ovarian cancer in the operating room, allowing surgeons to see ovarian cancer in order to remove it more effectively.

The second and third FDA-approved agents help diagnose and treat prostate cancer. A first-in-class targeted radiotherapy treatment for metastatic prostate cancer, Pluvicto has shown median survival increases of over 15.3 months for patients with the deadliest form of prostate cancer. Locametz is a companion diagnostic imaging agent that allows doctors to understand how patients will respond to the radiotherapy.

Cytalux is being commercialized by OnTarget Laboratories; Pluvicto and Locametz are being commercialized by a subsidiary of Novartis.

## Purdue Global

### FOCUS AREA VICE PRESIDENT OF ORGANIZATIONAL CULTURE AND CHIEF DIVERSITY OFFICER

**WHY IT MATTERS:** As the newest addition to the Purdue system, Purdue Global extends the university's land-grant mission by providing access to a high-quality, affordable education tailored to adult learners. Given that Purdue Global is an online institution, building a sense of community and maintaining a strong organizational culture is paramount to its success.

Tiffany G. Townsend now serves Purdue Global as vice president of organizational culture and chief diversity officer. She has worked for over 25 years advancing diversity, equity, and inclusion (DEI), most recently at Augusta University. At Purdue Global, Townsend will build and maintain cross-functional partnerships across institutional departments as well as among Purdue Global, Purdue West Lafayette, the other Purdue system schools, and communities served. This will help Purdue Global realize its goal of becoming a leading online university by cultivating a culture of holistic wellness, psychological safety, and belonging among all institutional members.

Townsend is building an innovative office structure that broadly integrates DEI work into an organizational culture framework, including an intentional focus on creating a people-centric culture supporting faculty, staff, and student development. Through this holistic approach, Purdue Global will help higher education be responsive to a broader, more diverse student body.



Phil Low

Tiffany Townsend



## Purdue Polytechnic Institute

### FOCUS AREA DUDLEY HALL AND LAMBERTUS HALL: THE GATEWAY COMPLEX

**WHY IT MATTERS:** Today's technologists and engineers need state-of-the-art resources, labs, and training to prepare for Industry 4.0, a new phase in the Industrial Revolution that focuses heavily on interconnectivity, automation, machine learning, and real-time data. In response, the Purdue Polytechnic Institute and the College of Engineering partnered to erect the largest building on campus, the Engineering and Polytechnic Gateway, or Gateway Complex.

Comprised of Dudley Hall and Lambertus Hall with a connected common area, the complex rises five stories high with a finished basement, panning across the combined footprints of two former one-story buildings, Michael Golden Laboratories and Nuclear Engineering. Serving as an impressive and inviting gateway for both colleges, the building features active-learning spaces, experiential project-based instructional labs, and design studios for senior capstone projects, in addition to collaborative spaces for students, a Student Success Center, and more.

The complex houses new laboratories for Purdue Polytechnic's School of Construction Management Technology, School of Engineering Technology, Department of Computer and Information Technology, and Department of Computer Graphics Technology. Dudley and Lambertus Halls represent a leading design for teaching, learning, research, and engagement for universities in the future. Classes will start meeting here in January 2023.

## College of Science

### FOCUS AREA BS DEGREE IN ARTIFICIAL INTELLIGENCE (AI)

**WHY IT MATTERS:** There is great need to equip students with a deep understanding and mastery of key AI concepts.

The ubiquity of sensing devices and the low cost of data storage have caused a data explosion. Today, 20 billion devices are connected to the internet; by 2030, that number will rise to 1 trillion.

Many real-world applications across all sectors, including health care, manufacturing, agriculture, and transportation, require knowledge of problem-solving, data analysis, reasoning, machine learning, and decision-making. To capture these skills and the high-level reasoning required to thrive in the workforce, the College of Science has launched its newest major, a bachelor of science in AI.

The degree program—which complements the BA in artificial intelligence in the College of Liberal Arts—will help students develop comprehensive skills to support an array of industries as they tackle complex problems using AI-based solutions. They will master the foundations and tools for building and understanding systems that extrapolate data, correct themselves, and make decisions. Students will also explore the link between cognitive psychology, neuroscience, AI, and the ethics of AI, which are all integral to a holistic understanding of artificial intelligence. The BS degree will open pathways to new careers ranging from health care and sustainability to business and economics.

This program will be housed in Purdue's new Data Science building that will be a hub for thinkers and doers who transform a ceaseless stream of data into information, innovation, and knowledge. The renovation of Schleman Hall to the Data Science building will provide a nexus for the core disciplines encompassing AI while facilitating collaboration to advance interdisciplinary projects with the sciences, engineering, and the liberal arts—a space that both energizes data scientists and synergizes their ideas.

## Student Life

### FOCUS AREA EXECUTIVE-IN-RESIDENCE (EIR) MENTORSHIP OPPORTUNITIES

**WHY IT MATTERS:** Students who live on campus perform better academically and are more engaged than those who don't.

A signature initiative, the Executive-in-Residence (EiR) program provides a unique mentorship opportunity for students in University Residences. Through EiR, prominent executives and alumni live in a Purdue residence hall for up to a week. During their stay, they engage with and mentor students in settings unique to their interests and expertise—from lecture and residence halls to dining and basketball courts.

Embedded in Transformative Education 2.0—part of Purdue's Next Moves—EiR focuses on learning outcomes related to leadership styles and the discovery and identification of career paths. Data shows that students who live on campus consistently earn higher GPAs and retain at a higher rate. This is further amplified through participation in learning communities where students outperform their peers by 4.5%. ▶▶▶



EiR is a unique example at Purdue of combining the power of mentorship and on-campus living that's making an impact on student success. The program continues to develop new opportunities, including the establishment of an accompanying learning community for the fall 2022 semester. Participating students help plan visits, develop engagement activities, and interact with executives in small groups and one-on-one settings.

The program is working to create future options for students to visit executives in their professional environments, develop internship opportunities, and engage with executives through philanthropic pursuits.

## College of Veterinary Medicine

### FOCUS AREA PHYSICAL REHABILITATION SERVICE

**WHY IT MATTERS:** For the first time, the Physical Rehabilitation Service has its own area with sufficient space for all therapies offered for a growing caseload. Previously, dedicated spaces for all therapies were extremely limited at the Small Animal Hospital in Lynn Hall. Physical rehabilitation for pets can have the same benefits as physical therapy does for humans.

The staff utilizes various manual exercises and modalities to attain a better range of motion in joints and increase muscle strength and endurance. The end goal is to improve patients' function and performance while increasing their overall quality of life.

The physical rehabilitation room in the new David and Bonnie Brunner Small Animal Hospital houses an underwater treadmill and in-ground therapy pool while also providing ample space for physical therapy exercises. The hospital uses an adjacent room for acupuncture.

Rehabilitation services employ a range of equipment, from physioballs, balance discs, and BOSU balls to electrical stimulation units (TENS and NMES), a classic IV therapy laser, and more. Rehabilitation fitness goals include weight loss; improved physical fitness; pain reduction; improved movement, balance, and joint mobility; successful ancillary arthritis treatment; maximized post-operative healing in cases of orthopedic and neurologic disease; and mental stimulation.

## SPIRIT OF THE ROCKIES

JULY 22–AUGUST 2, 2023

A 12-night land-and-train adventure in Western Canada!

## MONTEREY GETAWAY

AUGUST 24–27, 2023

Plan to join us on the West Coast!

## CALENDAR OF EVENTS

To learn about future trips, events, and experiences, visit [purdueforlife.org/pc](https://purdueforlife.org/pc)

### 2023

January 21–February 1	Splendors of Egypt and the Nile
February 8–12	Annual Weekend in Naples President's Council Back to Class and Annual Dinner (February 11)
July 22–August 2	Spirit of the Rockies: Train Across Canada <i>Booking now!</i>
August 24–27	Monterey Getaway <i>More information coming soon!</i>

### 2024

January 15–25	South Africa and Victoria Falls <i>Only two spots left!</i>
---------------	--

FEBRUARY 8–12, 2023

# NAPLES





**PRESIDENT'S  
COUNCIL**

PRESORTED  
FIRST CLASS MAIL  
US POSTAGE  
**PAID**  
PERMIT 74  
LAFAYETTE IN

Purdue University  
Dick and Sandy Dauch Alumni Center  
403 West Wood Street  
West Lafayette, IN 47907-2007

**CHANGE SERVICE REQUESTED**

Produced by the Purdue for Life Foundation, an independent organization that acts for the benefit of Purdue University // NG12/22 // EA/EOU

**Ten years ago, we set out to make a positive impact on our state, the nation, and the world by approaching higher education differently. A decade later, I hope we can fairly say we had some success.**

We endeavored to make a Purdue education affordable and to enable more young people to access that education. We seek to be known not for how many students we turn away but rather by how many we turn out, for the benefit of Indiana and the broader society.

Eleven years of frozen tuition have saved Boilermaker families well over \$1 billion, and the large majority of our students now graduate debt free. We've also launched several initiatives, including the Purdue Polytechnic High Schools and Purdue Global, that have expanded opportunities for students of diverse ages and life experiences.

Today, the demand for a Purdue education is stronger than ever. Fall enrollment at West Lafayette this year exceeded 50,000—an eighth consecutive record—while the caliber of our students has increased. To accommodate this growth, while maintaining Purdue's high-quality standards, we have continued to expand our faculty and facilities to provide only the highest-caliber teaching and research.

So there has been no tradeoff of quality for size with our growth; in fact, it's been just the opposite. We've seen a host of recognitions, for value, innovativeness, and most recently a No. 6 global ranking for most utility patents, a testament to Purdue's focus on innovation and entrepreneurship. And our No. 4 ranking among the most trusted public universities in the U.S. is perhaps the recognition we value most of all.

I've always said that there could be no better job than mine and no better people than Boilermakers. Thank you for supporting our students and for making a positive difference in the life of Purdue. We would never reach our level of success without your loyalty, generosity, and Boilermaker spirit.

**HAIL PURDUE!**

Mitchell E. Daniels, Jr.  
*President*

